



FEATURED HOME

LUXURY LIVING AT IT'S FINEST



LUXURY VILLA

\$332,900 • 1,789 sq ft • .238 Acre • Homesite 101 • Lot A • .423 Acre • Homesite 101 • Lot B

VILLAS OF BUENA VISTA

- 3 Bedroom
- 2 Bath
- 2 Car Attached Garage
- Unfinished Basement
- Granite Countertops
- 9 Foot Ceilings
- 10' x 12' Covered Rear Patio
- Low Maintenance
- No Association Fee

Directions: Take PA Turnpike towards Irwin - Exit 67. Merge left on Route 30 West. Make 1st right on Rocky Road. Turn left on PA Avenue. Turn right onto Brush Hill Road. Turn right on PA993. Turn right on Altman Street. Turn right onto Gina to Buena Vista

Photo may not be exact. Pricing, options, floor plans and information subject to change without notice.

Lock in
**TODAY'S
BEST RATE**
with only \$20,000
deposit

**FULL
BASEMENT
INCLUDED**

CALL FOR MORE
INFORMATION
724-861-0571

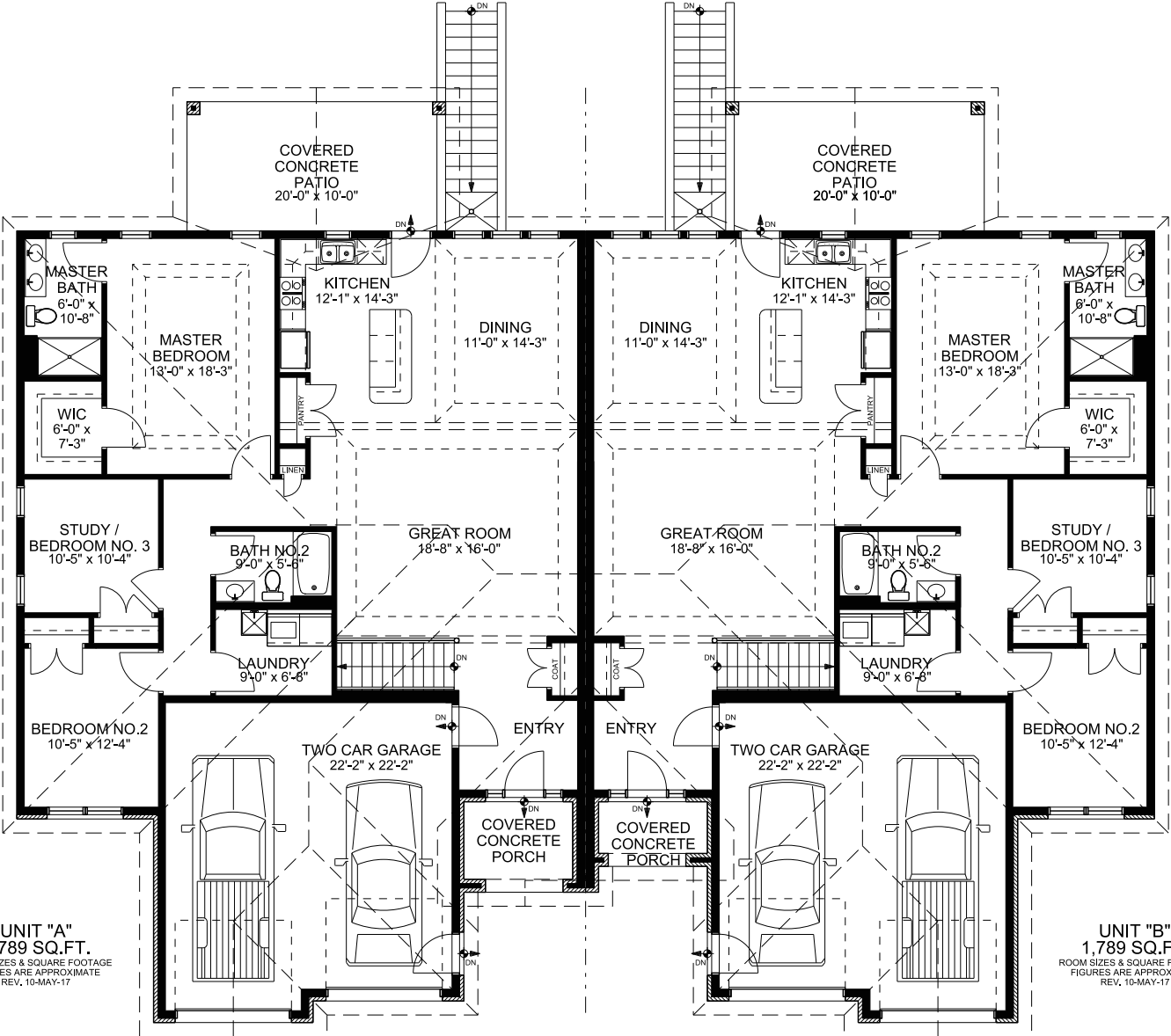


WWW.SHUSTERHOMES.COM

LUXURY VILLA

FLOOR PLAN

MAIN LEVEL



UNIT "A"
1,789 SQ.FT.
ROOM SIZES & SQUARE FOOTAGE
FIGURES ARE APPROXIMATE
REV. 10-MAY-17

UNIT "B"
1,789 SQ.FT.
ROOM SIZES & SQUARE FOOTAGE
FIGURES ARE APPROXIMATE
REV. 10-MAY-17



RWS Development believes all material to be correct but assumes no legal responsibility for it's accuracy. Square footage is an estimate.