



# CARRIAGE HOME

OUR NEWEST RANCH FLOOR PLAN



## CARRIAGE HOME

**\$382,000** • 1,785 sq ft Ranch • .0488 Acre • Homesite 345R • 337 Durst Road, N. Huntingdon, PA 15642

## BROOK HAVEN

- 3 Bedroom
- 2 Bath
- 2 Car Attached Garage
- Unfinished Basement
- Granite Countertops
- 9 Foot Ceilings
- 10' x 20' Covered Rear Patio
- Low Maintenance
- No Association Fee

**Directions:** PA turnpike toward Irwin, take exit 67. Merge left onto Route 30W to right on Rocky Road. Make left onto PA Avenue to right on Oak Street. Make left onto Second Street to right on Main Street. Continue on Station Street. Bear left on Morris Avenue which turns into Nike Site Road. Turn left onto Durst Road to right to Brook Haven.

Photo may not be exact. Pricing, options, floor plans and information subject to change without notice.

**UNDER  
CONSTRUCTION**

*Turn Key  
Villa!*

CALL FOR MORE  
INFORMATION

**724-861-0571**



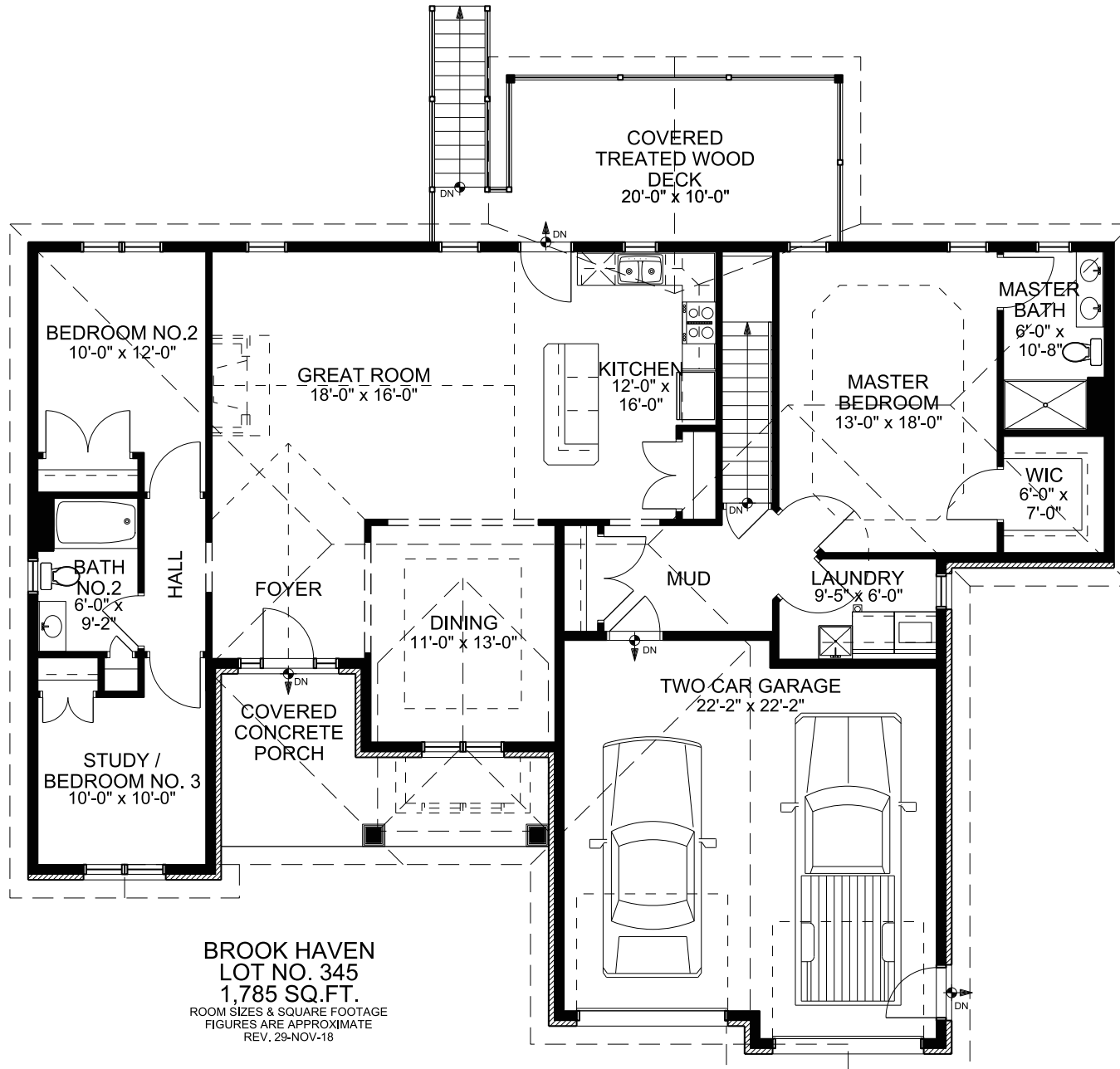
[WWW.SHUSTERHOMES.COM](http://WWW.SHUSTERHOMES.COM)

MAIN LEVEL

# CARRIAGE HOME

## FLOOR PLAN

1,785 Square Feet +/-  
Ranch  
3 Bedroom  
2 Bath  
2 Car Garage  
Full Basement



**BROOK HAVEN  
LOT NO. 345  
1,785 SQ.FT.**  
ROOM SIZES & SQUARE FOOTAGE  
FIGURES ARE APPROXIMATE  
REV. 29-NOV-18



RWS Development believes all material to be correct but assumes no legal responsibility for it's accuracy. Square footage is an estimate.