



CARRIAGE HOME

OUR NEWEST RANCH FLOOR PLAN



CARRIAGE HOME

\$364,900 • 1,785 sq ft • 1.024 Acre • Homesite 358 • 2125 Timothy Ln, N. Huntingdon, PA 15642

BROOK HAVEN

- 3 Bedroom
- 2 Bath
- 2 Car Attached Garage
- Unfinished Basement
- Granite Countertops
- 9 Foot Ceilings
- 10' x 20' Covered Rear Patio
- Low Maintenance
- No Association Fee

Directions: PA turnpike toward Irwin, take exit 67. Merge left onto Route 30W to right on Rocky Road. Make left onto PA Avenue to right on Oak Street. Make left onto Second Street to right on Main Street. Continue on Station Street. Bear left on Morris Avenue which turns into Nike Site Road. Turn left onto Durst Road to right to Brook Haven.

Photo may not be exact. Pricing, options, floor plans and information subject to change without notice.

DECORATED
MODEL

*Turn Key
Villa!*

CALL FOR MORE
INFORMATION

724-861-0571



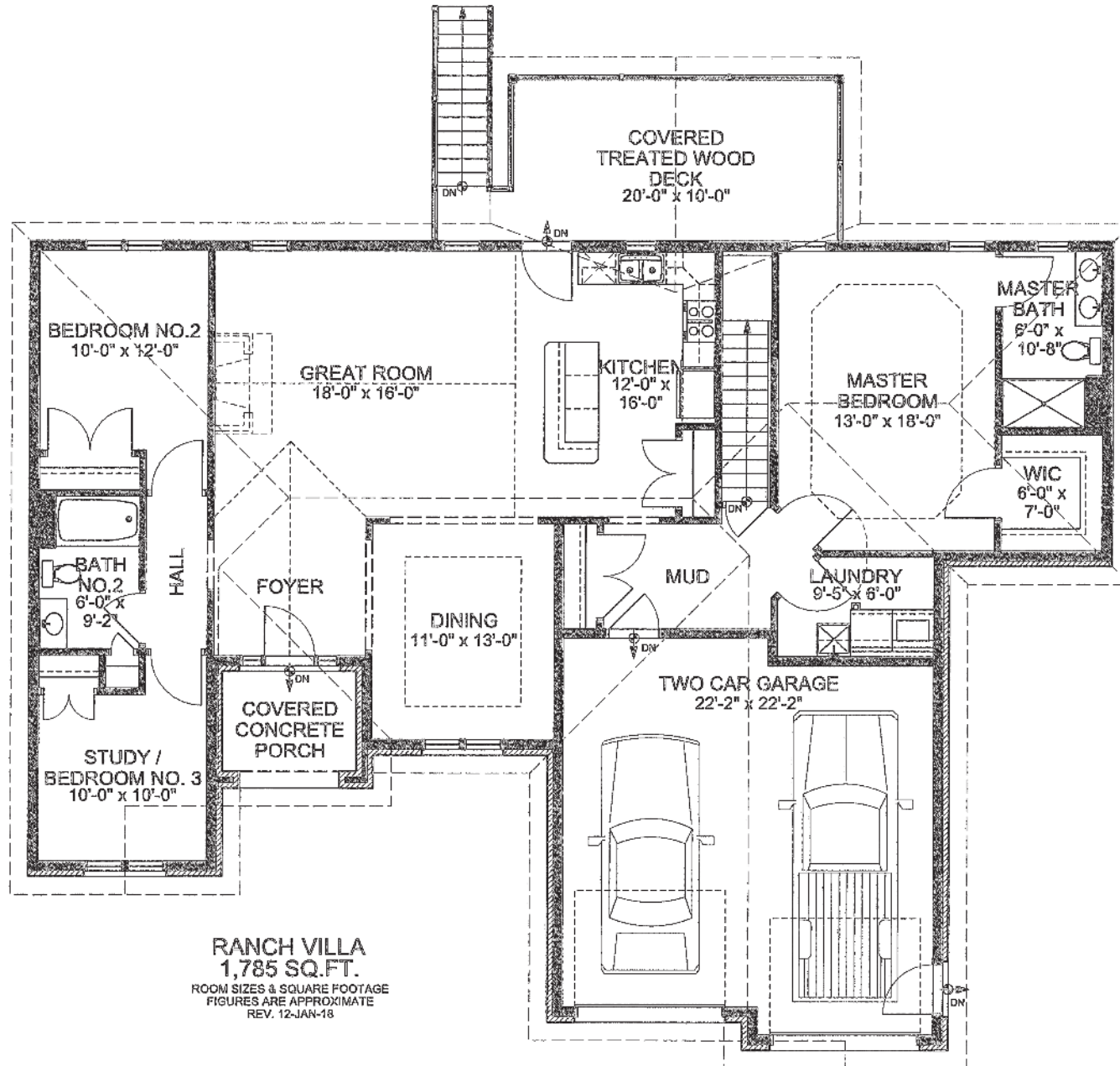
WWW.SHUSTERHOMES.COM

MAIN LEVEL

CARRIAGE HOME

FLOOR PLAN

1,785 Square Feet +/-
Ranch
3 Bedroom
2 Bath
2 Car Garage
Full Basement



RANCH VILLA
1,785 SQ.FT.
ROOM SIZES & SQUARE FOOTAGE
FIGURES ARE APPROXIMATE
REV. 12-JAN-18



RWS Development believes all material to be correct but assumes no legal responsibility for it's accuracy. Square footage is an estimate.