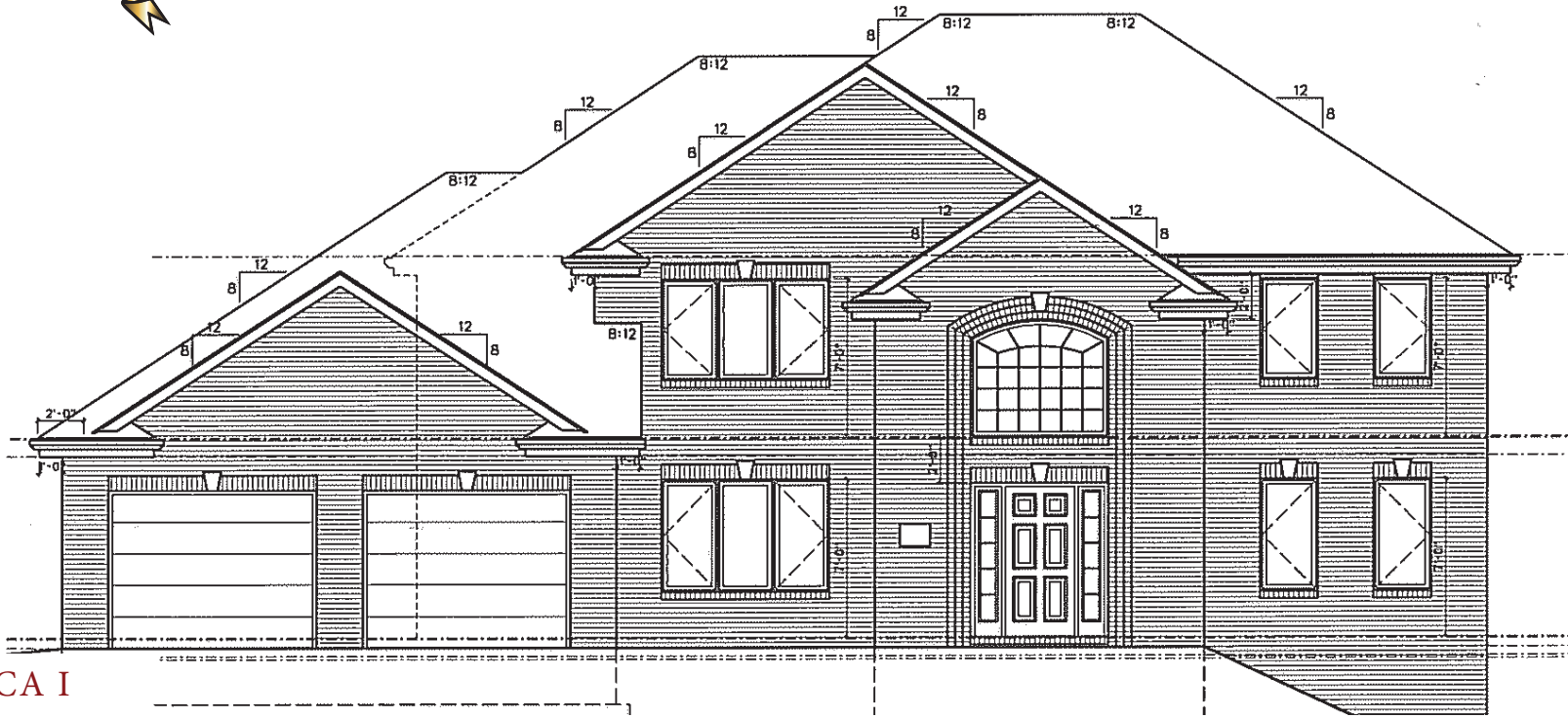




FEATURED HOME

EXCELLENCE IS STANDARD



VERONICA I

\$429,900 • 2,426 sq ft • .330 Acre Homesite • Lot #2 • 1168 Weber Court, North Huntingdon

WEBER ESTATES

- North Huntingdon Twp.
- Granite Countertops
- 2 Car Garage / Storage
- 4 Bedroom - 2 1/2 Baths
- Open Floor Plan
- First Floor Laundry

Directions: Take Route 30 west, to left onto Colonial Manor Road to left into Weber Estates.

Photo may not be exact. Pricing, options, floor plans and information subject to change without notice.

UNDER CONSTRUCTION

Turn Key Model!

CALL FOR MORE INFORMATION

724-861-0571

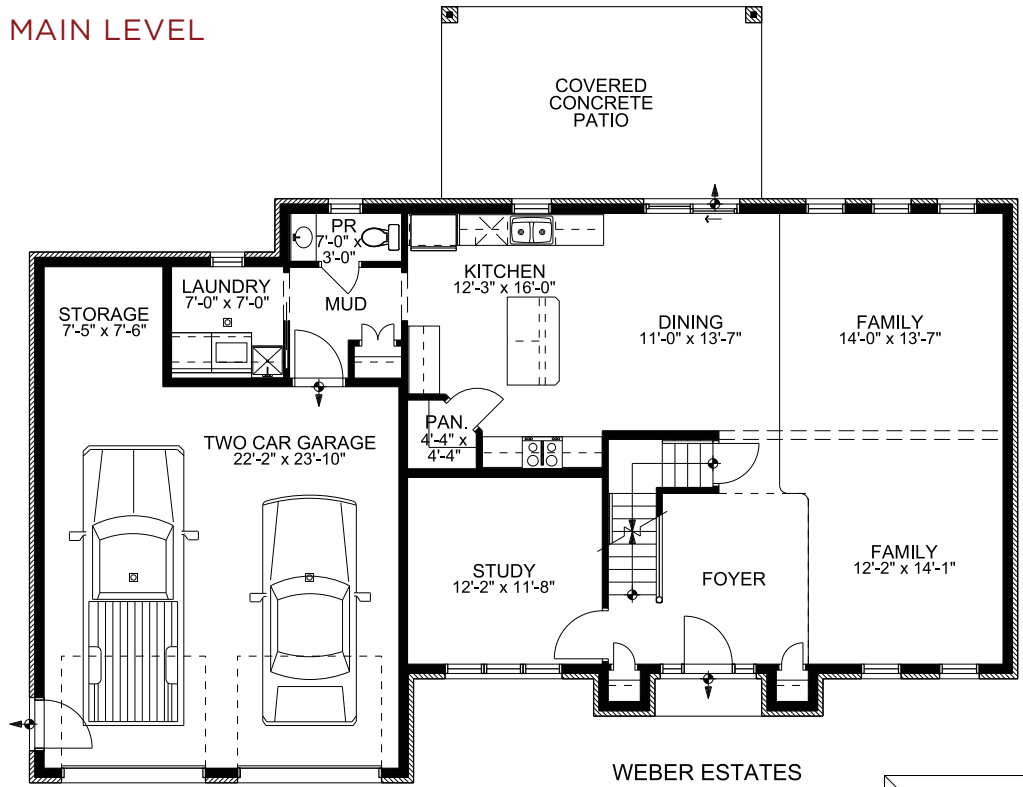


WWW.SHUSTERHOMES.COM

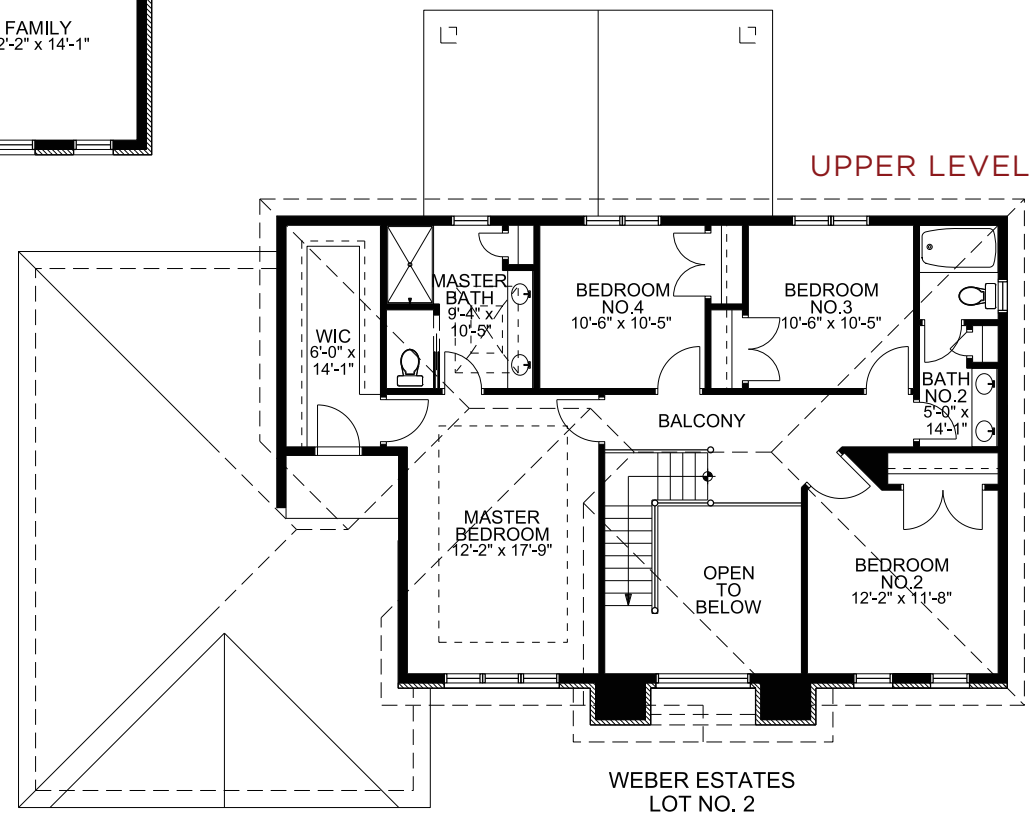
VERONICA I

FLOOR PLAN

2426 Square Feet +/-
 Two Story
 4 Bedroom
 2 1/2 Bath
 2 Car Garage / Storage



**WEBER ESTATES
 LOT NO. 2**
 1,328 SQ.FT.
 ROOM SIZES & SQUARE FOOTAGE
 FIGURES ARE APPROXIMATE
 REV. 01-FEB-19



**WEBER ESTATES
 LOT NO. 2**
 1,112 SQ.FT.
 ROOM SIZES & SQUARE FOOTAGE
 FIGURES ARE APPROXIMATE
 REV. 01-FEB-19



RWS Development believes all material to be correct but assumes no legal responsibility for it's accuracy. Square footage is an estimate.