



FEATURED HOME

EXCELLENCE IS STANDARD



THE VERONICA

\$394,900 • 2,421 sq ft • .418 Acre Homesite • Lot #1 • 1150 Weber Court, North Huntingdon

WEBER ESTATES

- North Huntingdon Twp.
- Granite Countertops
- 2 Car Garage
- 4 Bedroom - 2 1/2 Baths
- Open Floor Plan
- First Floor Laundry

Directions: Take Route 30 west, to left onto Colonial Manor Road to left into Weber Estates.

Photo may not be exact. Pricing, options, floor plans and information subject to change without notice.

UNDER
CONSTRUCTION

*Turn Key
Model!*

CALL FOR MORE
INFORMATION

724-861-0571



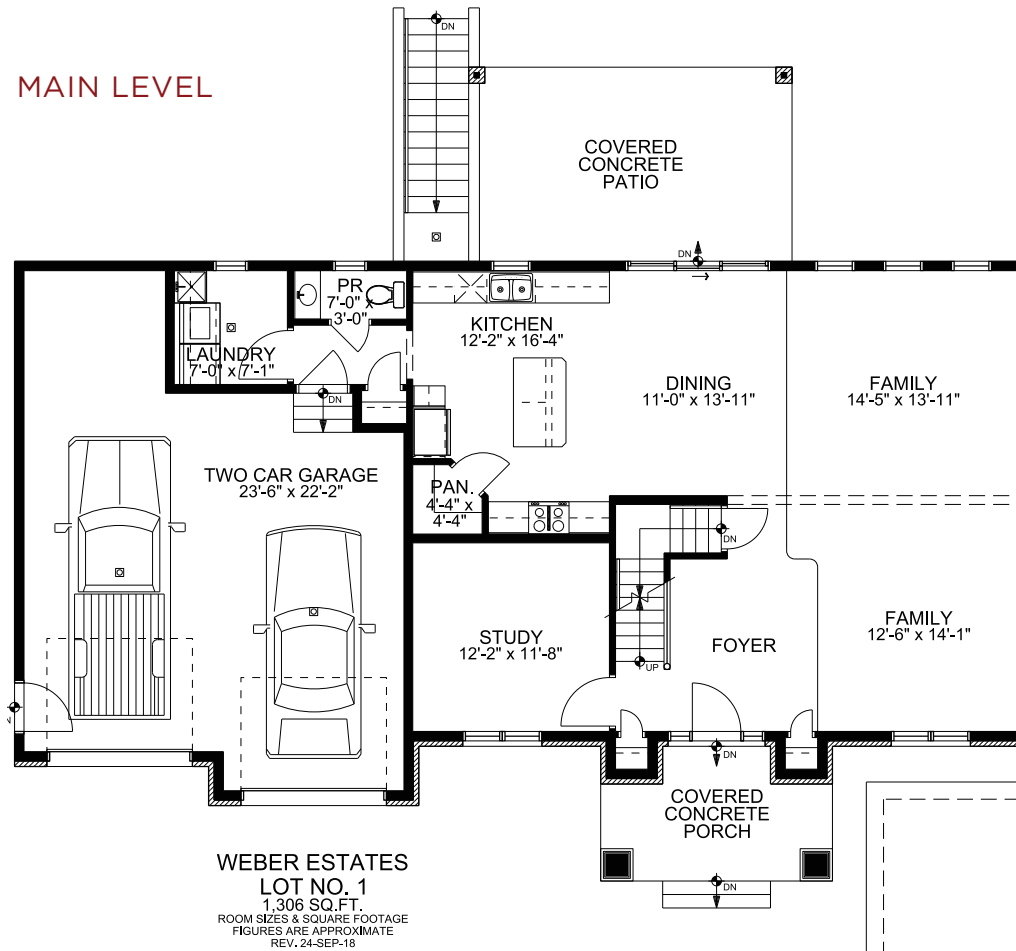
WWW.SHUSTERHOMES.COM

VERONICA

FLOOR PLAN

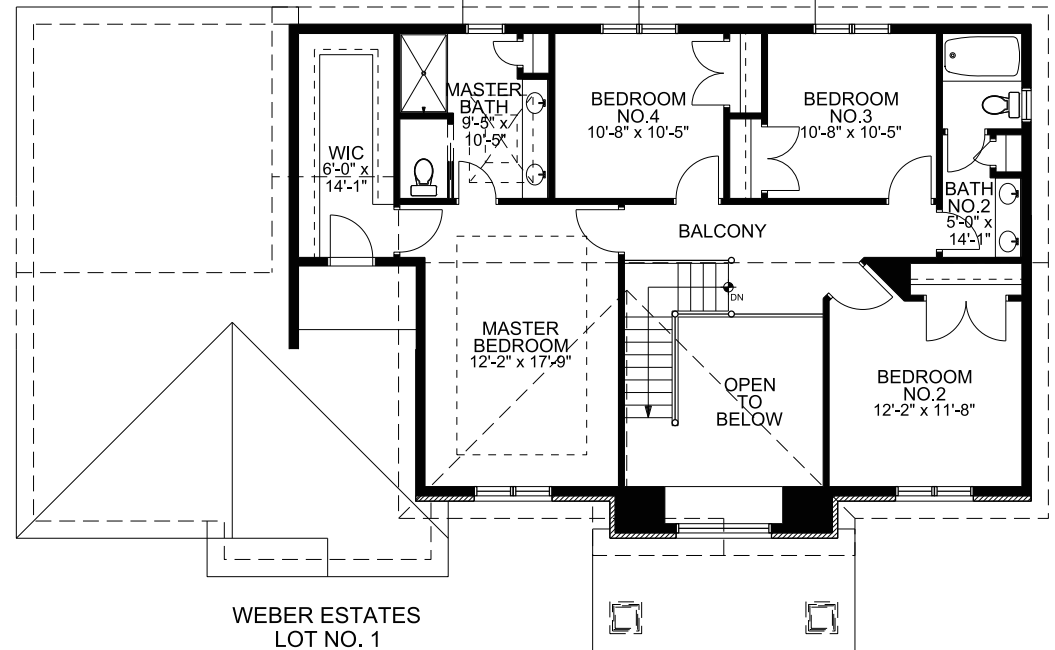
2421 Square Feet +/-
 Two Story
 4 Bedroom
 2 1/2 Bath
 2 Car Garage

MAIN LEVEL



WEBER ESTATES
 LOT NO. 1
 1,306 SQ.FT.
 ROOM SIZES & SQUARE FOOTAGE
 FIGURES ARE APPROXIMATE
 REV. 24-SEP-18

UPPER LEVEL



WEBER ESTATES
 LOT NO. 1
 1,115 SQ.FT.
 ROOM SIZES & SQUARE FOOTAGE
 FIGURES ARE APPROXIMATE
 REV. 24-SEP-18



RWS Development believes all material to be correct but assumes no legal responsibility for it's accuracy. Square footage is an estimate.